

Owners Manual

Product Code: 1182T



WORKSHOP FAN MISTING



Specifications:

- Motor: 240V/50Hz/260W 3 Speed
- Fan Blade: 650mm Cast Steel 3 Blade
- Noise Level: 60dB(A)
- Maximum airflow: 138 cubic metres per minute
- Oscillation angle: 90°
- Fan tilt adjustable: 30°
- Adjustable Mist - Exit Vol: 0-16kg/Hour
- Effective area: 200 sq metres
- Operating Temperature: 10 - 50° Celcius
- Effective temp drop: 2 - 8° Celcius
- Operation Humidity: 10% - 85%
- Diameter of atomized drip: < 10 um
- Mist Jet distance: 8-10 m

About the TradeQuip brand

The 'TradeQuip' brand of workshop equipment, is designed for use in a demanding workshop environment by professional users. With proven and trusted "Made for the Trade" reliability, 'TradeQuip' branded products offer the very best in performance for an affordable price. All backed by a 1year trade guarantee across 1,000+ distributors Australia wide.



WARNING

IMPORTANT: READ ALL INSTRUCTIONS BEFORE USE



WARNING

The instructions and warnings contained in this manual should be read and understood before using or operating this equipment. Do not allow anyone to use or operate this equipment until they have read this manual and have developed a thorough understanding of how this equipment works. Failure to observe any of the instructions contained in the manual could result in severe personal injury to the user or bystanders, or cause damage to the equipment and property. Keep this manual in a convenient and safe place for future reference.

Whilst every effort has been made to ensure accuracy of information contained in this manual, the TQB Brands Pty Ltd policy of continuous improvement determines the right to make modifications without prior warning.

CONTENT

WARNING 2

CONTENT 2

STANDARD OPERATING PROCEDURE 3

ASSEMBLY, OPERATION, PREVENTITIVE MAINTENANCE 4

PARTS LIST 6

WARRANTY 7

STANDARD OPERATING PROCEDURE

DO NOT use this equipment unless you have been trained and assessed to a competent level in its safe use and operation, and have been given permission to use this



DO NOT tilt the unit



DO NOT operate the unit with wet or damp hands

PRE-OPERATIONAL SAFETY CHECKS

Please read the following very carefully as failure to comply may invalidate your guarantee. When using electrical appliance basic precautions should always be followed including below:

- When servicing, use only TradeQuip identical replacement parts. Use of any other parts will void the warranty. Ensure the Pedestal Fan is disconnected from power before servicing.
- Use the right product for the job. There are certain applications for which the TradeQuip Portable Misting Fan was designed. Do not modify the Portable Misting Fan and do not use the Misting Fan for a purpose for which it was not intended.
- This product is intended for indoor use only.
- Always operate the product from a power source of the same voltage, frequency and rating as indicated on the product identification plate.
- To reduce the risk of electric shock, do not use this fan with any solid-state speed control device.
- This electrical appliance is not intended for use by persons (including children) with reduced physical, sensory or mental capabilities, or lack of experience and knowledge, unless they have been given supervision or instruction concerning use of the appliance by a person responsible for their safety.
- Do not insert fingers or any other foreign object through the front and rear grills into the blade.
- Close supervision is necessary when any product is used by or near children or infirm persons. Do not allow children to use it as a toy.
- Do not operate any product with a damaged cord or plug, after the product malfunctions, is dropped or appears damaged in any way. Return the complete product to the place of purchase for inspection, repair, or replacement.
- To reduce the risk of electric shock, do not immerse or expose the product or flexible cord to rain, moisture, or any liquid.
- This product should not be used in the immediate vicinity of water vessels such as sinks, bathtubs, washbowls, swimming pool, etc. where the likelihood of immersion or excessive splashing could occur.
- Switch off and unplug from outlet when not in use, before assembling or disassembling parts, and before cleaning. Fully assemble the fan and tank before switching on.
- Avoid contact with moving parts. Do not insert any object through the grill when the fan is operating.
- Do not cover the grill, or operate in close proximity to curtains, etc.
- Always disconnect the fan when moving it from one location to another.
- The use of attachments or accessories not recommended or sold by the product distributor may cause personal or property hazards or injuries.

INTENDED USE

This equipment is intended to be used for cooling industrial or trade workshop/office environments by airflow circulation. Best used to cool when directed at a small area.

This product is an Industrial Product and not suitable for household use.

ASSEMBLY, OPERATION, PREVENTITIVE MAINTENANCE

1. FEATURES

This **TradeQuip "Made for the Trade"** Portable Misting Fan is powered by a vented, steel-cased 3-speed 240V 260W motor that delivers up to 138m³ per minute. High-temperature resettable thermal auto reset and durable bearings allow operation in high temperatures. Non-corroding aerodynamically balanced cast aluminium blades deliver quiet operation. Adjust the 30° fan head tilt adjustment and double-locking guard to direct the airflow wherever necessary.

The *TradeQuip* Workshop Fans are commercial quality, industrial duty fans ideal for cooling large commercial workshop areas in the hottest Australian climates.

2. BEFORE USE

Prior to each use conduct a visual inspection by checking for abnormal conditions, such as cracked joints and damaged, loose, or missing parts.

Ensure that the fan is disconnected from the mains supply before removing the guards. If the electrical cord is ever found to be damaged, it must be replaced by the manufacturer, service agent or similarly qualified persons in order to avoid a hazard.

3. ASSEMBLY

Assemble the Support Column Bracket to the Tank Base:

- a) Whilst holding the tank assembly and base, push the Support Column Bracket into the Tank Base Socket.
- b) Secure the Support Column Bracket to the Tank Base using the bolt and washers and firmly tighten.

Attach the Fan Motor to the Support Column Bracket

- a) Locate the fixing hole on the motor locating tube & align the hole with the hole in the Support Column Bracket & push in place.
- b) To secure the Fan Motor Assembly to the Support Column Bracket use the long bolt and washer and push through the lower hole & tighten, using the short bolt push through the upper hole and tighten.

Attach the Rear Safety Guard to the Fan Motor

- a) Align the Rear Safety Guard Grill to the Fan Motor housing so that the fan grill guard securing hole is at the bottom of the fan and align the four screw holes.
- b) Firmly tighten all the four screws.

Attach the Fan Blade to the Fan Motor Assembly

- a) Rotate the fan motor shaft until the rebated flat area on the shaft is in the 12 o'clock position.
- b) Locate the lock screw in the fan blade coupling; while aligning the screw and motor shaft rebated flat area push the Fan Blade all the way onto the shaft and firmly tighten the grub screw by rotating in a clockwise direction.

Attach the Misting Assembly to the Front Safety Guard Grill

- a) Align the top locking clip on the Front Safety Guard to the top centre of the Misting Assembly.
- b) Secure the Misting Assembly to the Front Safety Guard using the fan grill securing hole in the bottom of the fan grill guard by inserting the fixing screw and nut provided.

Attach the front Safety Guard & Misting Assembly to the Fan Motor & Rear Guard Assembly

- a) Align the top locking clip on the Front Safety Guard to the top centre of the Rear Safety Guard that has already been secured to the fan motor. Lock the side and bottom clips in place.
- b) Secure the Front & Rear Safety Guards together using the fan grill securing hole in the bottom of the fan grill by inserting the fixing screw and nut provided.
- c) Connect the 3 motor wires into the colour coded sockets

4. OPERATION

Always ensure the Portable Misting Fan is operated on a hard and level floor surface.

Fan Control:

The 240V/260W Fan Motor has 3 speeds and should only be operated with a minimum amount of water in the tank.

Misting Control:

Once the water tank has been filled, turn on the fan motor. When up to normal speed open the mist spray valve. Ensure the return water flows back to the tank.

Oscillating Control:

The oscillation pattern can be adjusted from 0-90 degrees. When the adjusting screw is moved towards the rotating axle, the fan will oscillate less of an angle. The longer-the distance from adjusting screw, the larger the oscillating angle will be. Before you change the oscillating angle, disconnect the 240V power supply, then loosen the adjusting screw and adjust to obtain a satisfactory angle.

Change of the air circulation direction:

If you want to change the direction of the air circulation, disconnect the power supply and loosen the direction adjustment bolt to adjust the direction of the fan head to required position and re-tighten the bolt. It is not necessary to move the base of the fan.

Head angle adjustment:

Disconnect the power. Loosen the locking bolt, adjust the fan head to ideal position and then tighten up the locking bolt. In order to avoid the fan head falling down suddenly ensure the fan head is securely held when the locking bolts are being loosened.

Adjustment of air volume:

Turn the switch on the back of the fan head to control the operation of the fan to adjust air volume, "1-3" speeds indicate different air volume.

5. STORAGE

This TradeQuip Portable Misting Fan should always be stored in a dry location on a level surface.

When you stop using the fan, you should clean the fan, pack it and put it in dry places, be careful not to damage the fan blade.

6. MAINTENANCE

Disconnect power prior to any maintenance

Inspect the general condition of the Pedestal Fan checking:

- for loose hardware
- cracked, bent, or broken parts, and
- any other condition that may affect the Pedestal Fan safe operation

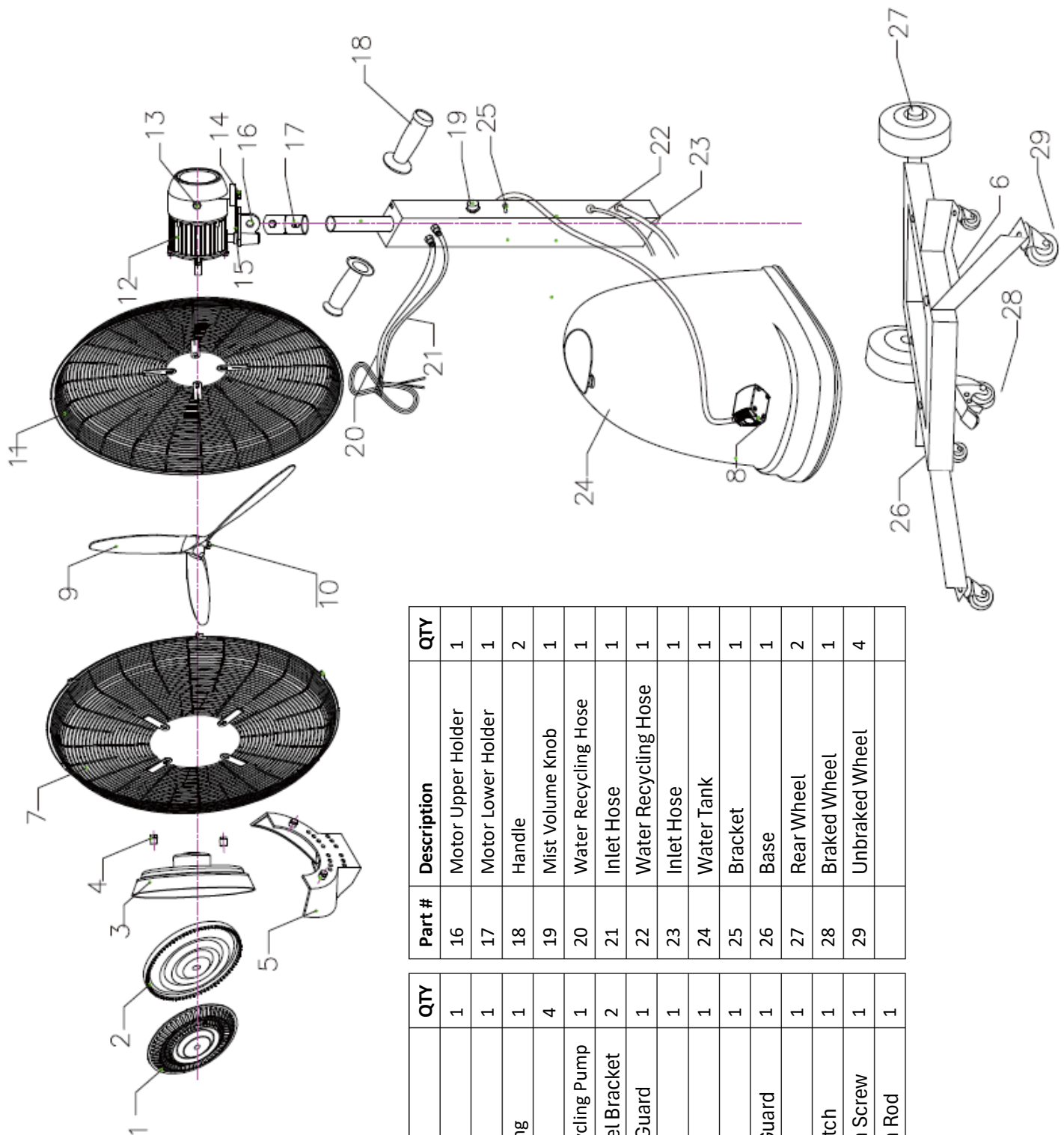
Grease Change:

After the fan is operated over 2,000 hours (or at least once a year), the grease in the gear box and bearing should be changed.

7. SERVICE & REPAIR

Any TradeQuip Portable Misting Fan found damaged in any way, or found to be worn or operates abnormally should be removed from service until repaired by an authorised service agent. Owners and / or operators should be aware that repair of this product may require specialised equipment and knowledge. Only authorised parts, labels and decals shall be used on this equipment. Annual inspection of this Pedestal Fan is recommended and can be made by an authorised repair facility to ensure that your equipment is in optimum condition and that the equipment has the correct decals and safety labels specified by the manufacturer.

PARTS LIST



Part #	Description	QTY	Part #	Description	QTY
1	Mist Guard	1	16	Motor Upper Holder	1
2	Mist Disk	1	17	Motor Lower Holder	1
3	Mist Housing	1	18	Handle	2
4	Screw	4	19	Mist Volume Knob	1
5	Water Recycling Pump	1	20	Water Recycling Hose	1
6	Base Wheel Bracket	2	21	Inlet Hose	1
7	Front Fan Guard	1	22	Water Recycling Hose	1
8	Pump	1	23	Inlet Hose	1
9	Blade	1	24	Water Tank	1
10	Screw	1	25	Bracket	1
11	Rear Fan Guard	1	26	Base	1
12	Fan Motor	1	27	Rear Wheel	2
13	Speed Switch	1	28	Braked Wheel	1
14	Oscillation Screw	1	29	Unbraked Wheel	4
15	Oscillation Rod	1			

WARRANTY

TradeQuip "Made for the Trade" products have been carefully tested and inspected before shipment and are guaranteed to be free from defective materials and workmanship for a period of 12 months from the date of purchase except where tools are hired out when the guarantee period is ninety days from the date of purchase.

Should this piece of equipment develop any fault, please return the complete tool to your nearest authorised warranty repair agent or contact TQB Brands Pty Ltd Warranty team – warranty@tqbbrands.com.au.

If upon inspection it is found that the fault occurring is due to defective materials or workmanship, repairs will be carried out free of charge. This guarantee does not apply to normal wear and tear, nor does it cover any damage caused by misuse, careless or unsafe handling, alterations, accident, or repairs attempted or made by any personnel other than the authorised TQB Brands Pty Ltd repair agent.

This guarantee applies in lieu of any other guarantee expressed or implied and variations of its terms are not authorised.

Your TQB Brands Pty Ltd guarantee is not effective unless you can produce upon request a dated receipt or invoice to verify your proof of purchase within the 12month period.

Consumer Guarantee

Our goods come with a guarantee that cannot be excluded under the Australian Consumer Law. You are entitled to a replacement or refund for a major failure and compensation for any other reasonably foreseeable loss or damage. You are also entitled to have the goods repaired or replaced if the goods fail to be of acceptable quality and the failure does not amount to a major failure.



All images and illustrations shown are for reference purposes only. All information, specifications and illustrations in this manual are based on the latest information available at the time of publication and are subject to change without notice. The information in this manual is periodically revised to ensure the latest information is included. Download the latest version of this manual and other related technical documentation from www.tqbbrands.com.au