

Superior quality since
1984



Owners Manual

60,000KG AIR ACTUATED JACK

BORUM

INDUSTRIAL WORKSHOP EQUIPMENT

**INDUSTRIAL
QUALITY**

Specifications

AIR ACTUATED JACK 3 STAGE 60,000/40,000/20,000KG

- First Stage: 60,000kg Safe Working Capacity
- Second Stage: 40,000kg Safe Working Capacity
- Third Stage: 20,000kg Safe Working Capacity
- First Stage Hydraulic Lift: 57mm
- Second Stage Hydraulic Lift: 59mm
- Third Stage Hydraulic Lift: 61mm
- Minimum Height: 150mm
- Maximum Height: 447mm
- Adaptors: 45mm and 75mm
- Handle Length: 1380mm
- Operating Air Pressure: 145-175psi
- Chassis: 875x295x150mm
- Net Weight: 67kg



About the Borum brand

Our **"heavy duty commercial"** range of **Borum Industrial** equipment has been manufactured to exacting standards for the past **40 years**. We specify industrial quality components and design to ensure a long and durable working life in **commercial transport, mining, earthmoving and railway** environments. Our **Borum Industrial** range of equipment is focused on achieving superior professional standards, reliability, quality, and are covered by a **12 month trade use warranty**.

WARNING INFORMATION



IMPORTANT: READ ALL INSTRUCTIONS BEFORE USE

WARNING

The instructions and warnings contained in this manual should be read and understood before using or operating this equipment. Do not allow anyone to use or operate this equipment until they have read this manual and have developed a thorough understanding of how this equipment works. Failure to observe any of the instructions contained in the manual could result in severe personal injury to the user or bystanders, or cause damage to the equipment and property. Keep this manual in a convenient and safe place for future reference. The warnings, cautions and instructions discussed in this instruction manual cannot cover all possible conditions and situations that may occur. It must be understood by the operator that common sense and caution are factors which cannot be built into this product, but must be supplied by the operator. Whilst every effort has been made to ensure accuracy of information contained in this manual, the Borum policy of continuous improvement determines the right to make modifications without prior warning.

CONTENTS

WARNING INFORMATION	Page 1
CONTENTS	Page 1
STANDARD OPERATING PROCEDURE	Page 2
ASSEMBLY, OPERATION, PREVENTATIVE MAINTENANCE	Page 3
TROUBLESHOOTING	Page 7
CYLINDER PARTS LIST & DIAGRAM	Page 8
PUMP PARTS DIAGRAM	Page 9
PUMP PARTS LIST	Page 10
BODY PARTS LIST & DIAGRAM	Page 11
PRODUCT INFORMATION TIPS	Page 12
WARRANTY	Page 13

STANDARD OPERATING PROCEDURE

DO NOT use this machine unless you have been trained and assessed to a competent level in its safe use and operation, and have been given permission



Safety glasses must be worn when operating this equipment



Safety footwear must be worn when operating this equipment



Safety gloves must be worn when operating this equipment



Long loose hair must be contained when operating this equipment



Close fitting/protective clothing must be worn when operating this equipment

PRE-OPERATIONAL SAFETY CHECKS

1. Support the load with appropriate means after lifting.
2. Do not exceed the rated capacity.
3. Center the load on the jack.
4. Use only attachments and/or adapters supplied with or specifically sold for the jack.
5. Lift only at the vehicle areas designated by the manufacturer.
6. Use the jack as a lifting device only.
7. Operate only on a hard, level surface.
8. Do not modify the jack.

OPERATIONAL SAFETY CHECKS

1. Use this jack solely for lifting and lowering. Always support the raised load with approved jack stands, and never place any part of your body under a load supported only by this jack.
2. Position the jack to lift only at the load areas specified by the manufacturer.
3. Employ jack stands—after lifting, always support the load with appropriately rated stands before performing any work on it.
4. Do not exceed the jack's rated capacity. Overloading can lead to damage or failure of the jack.
5. Operate only on hard, level surfaces capable of supporting the load. Using it on other surfaces may cause instability and potential loss of the load.
6. Center the load on the jack saddle before lifting the vehicle.
7. Off-center loads or lifting on an unlevel jack can result in load loss or damage to the jack.
8. Keep hands and feet clear of the jack's hinge mechanism and ground contact area when lowering the load.
9. Never lift the load from airbag brackets; always lift from an axle or chassis lift point.
10. Have a qualified person maintain the jack in good condition, keeping it clean for optimal and safe performance.

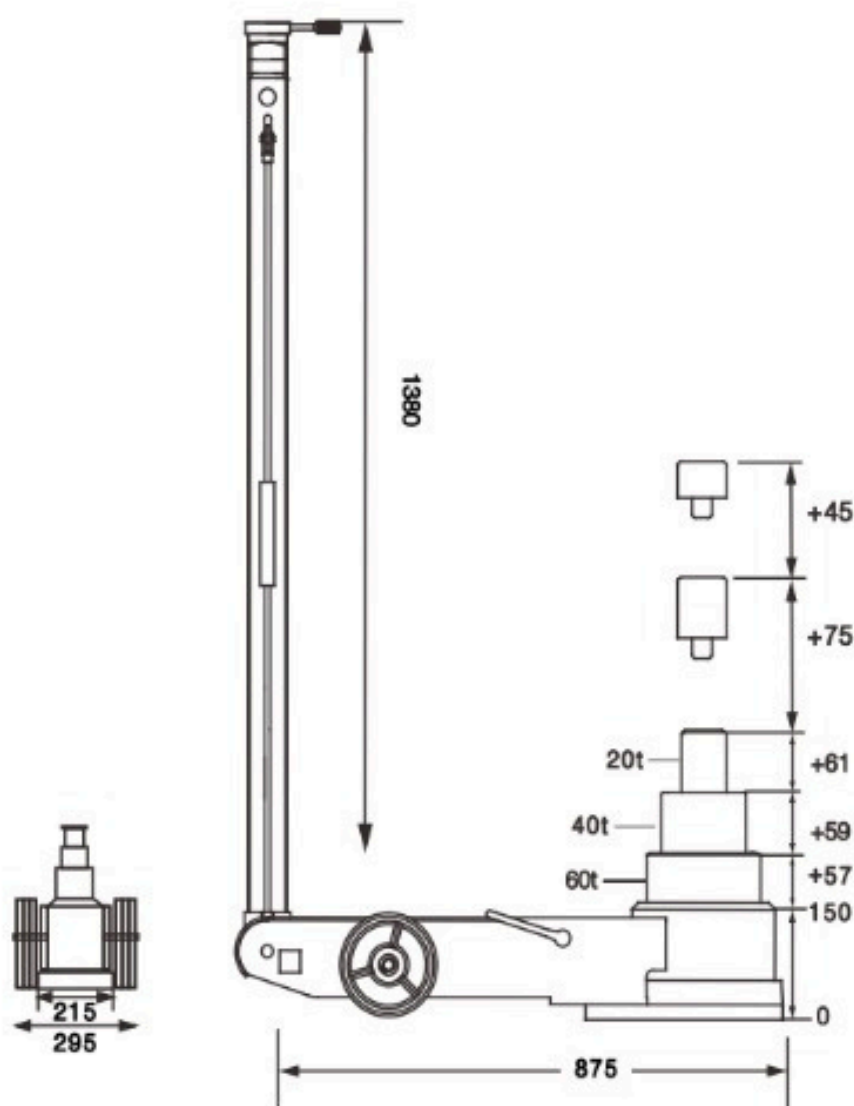
THIS JACK IS A LIFTING DEVICE ONLY & IS DESIGNED FOR LIFTING PART OF THE TOTAL VEHICLE/LOAD. DO NOT MOVE OR DOLLY THE VEHICLE/LOAD WHILST THE VEHICLE/LOAD IS ON THE JACK.

ASSEMBLY, OPERATION, PREVENTITIVE MAINTENANCE

1. FEATURES

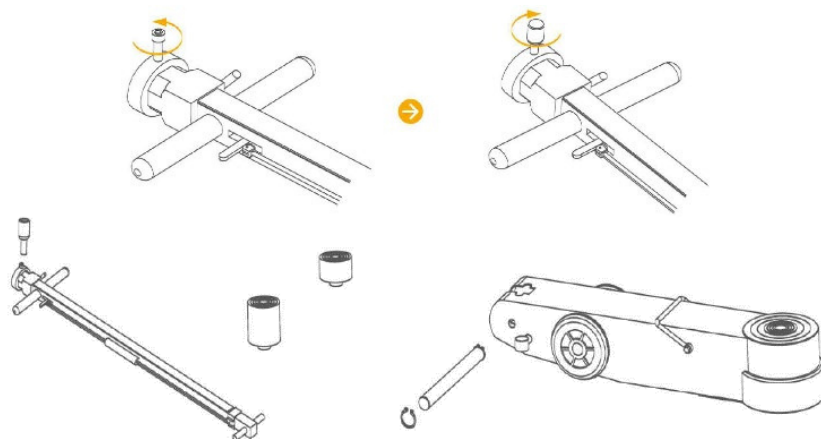
The **BORUM "Industrial Quality"** Commercial Jacks are crafted to TQB Brands' specifications, using premium components manufactured to precise standards with CNC machining and robotic welding. This ensures outstanding industrial performance and reliability. These jacks are an excellent choice for a variety of applications, built from top-grade, durable steel. The highly robust hydraulic pump features wear-resistant American-made XTP double sealing ring technology, while only the highest-quality hydraulic oil, tested from -25°C to 60°C, is used.

Operate these dependable workhorses with a 145–175 psi air pressure supply for efficient, powerful lifting. With multiple lifting options and included saddle adaptors, BORUM Commercial Jacks cater to a wide range of needs, from agriculture and mining to earth-moving, passenger transport, aviation, and military applications.

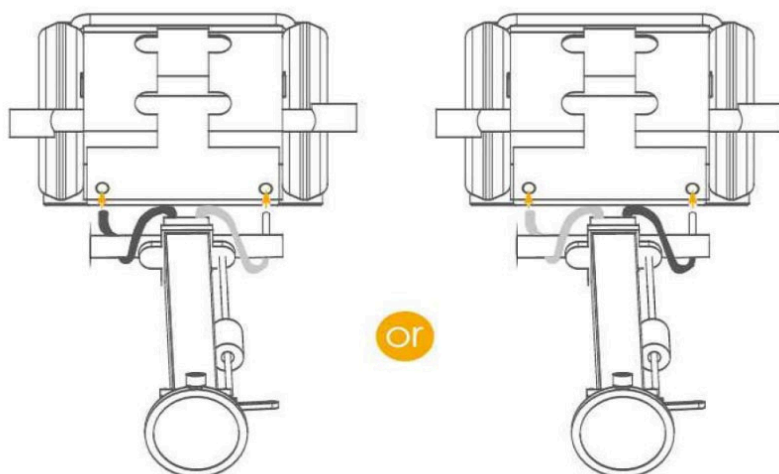


2. ASSEMBLY

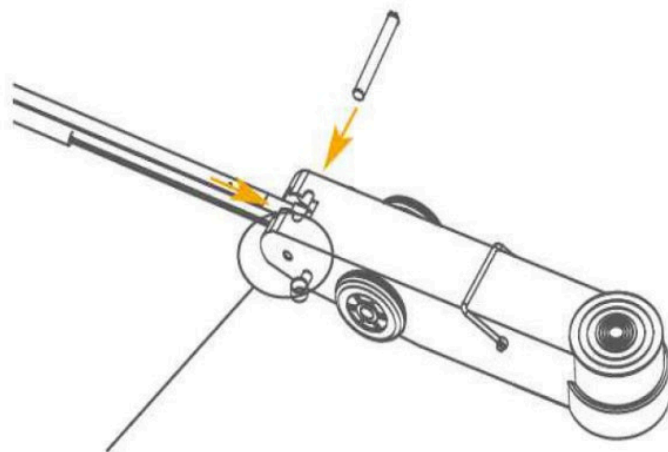
- Step 1: Screw toggle (taped to bottom of carton with handle in) into the top of the handle. Remove axle from rear of jack.



- Step 2: Insert hoses from Handle into rear of jack as pictured below.



- Step 3: Insert handle base into slot and thread axle through jack and handle. Lock in place with circlip



PLEASE NOTE:
TO LOWER THE JACK, THE SAME AMOUNT OF FREE AIR FLOW IS REQUIRED AS WHEN LIFTING

3. BEFORE USE

Before each use, perform a visual inspection to check for any issues, such as cracked welds, leaks, or damaged, loose, or missing parts.

- Check the vehicle owner's manual to identify the correct lift points.
- Ensure the vehicle is in park with the emergency brake engaged and wheels firmly chocked.
- Verify that both the vehicle and the jack are positioned on a hard, level surface.

4. OPERATION

1. This jack features a handle position lock. To adjust the handle, lift the lever to release the lock; the spring-loaded lever will automatically lock into the desired position.
2. Ensure both the jack and the load are on a hard, level surface.
3. Always engage the vehicle's parking brake and secure the wheels with blocks.
4. Verify the jack's placement, ensuring the load is centered on the saddle. Avoid obstacles like gravel, tools, or uneven expansion joints that could affect the jack's wheels.
5. Place the jack under the load at the manufacturer's recommended lifting points on the chassis.
6. Connect a compressed air supply to the jack (ensure the air is clean, dry, and regulated between 120-170 psi). Install an air filter/lubricator in the workshop air line, as water in the line can damage the jack.
7. Turn the lever to the RIGHT to the UP position (release the lift control trigger to stop air operation). Pump the jack until the head cap contacts the load.
8. Before lifting, double-check that the saddle is centered and fully contacts the specified lifting point.
9. Turn the lever to the RIGHT to the UP position (release the lift control trigger to stop air operation). Pump the jack to raise the load to the desired height.
10. Immediately place approved support stands under the load at stable support points, following the vehicle or load manufacturer's recommendations.
11. Slowly lower the load onto the support stands by turning the lever to the LEFT to the DOWN position.
12. Gently lower the load onto the support stands by adjusting the lever to the DOWN position.

Lowering the Load

1. Lift the load by following Steps 2-9.
2. Raise the load sufficiently to provide clearance for removing the support stands by turning the lever to the Right UP position.
3. Gently remove the support stands.
4. Hold the jack handle firmly, ensuring a secure grip to prevent your hands from slipping and to control the release valve's descent speed.
5. Slowly open the release valve by carefully turning the lever to the LEFT DOWN position.
6. After the load is lowered, remove the jack from underneath, and fully retract the ram to protect it from dirt and grime.

5. INSPECTION

- Before each use, perform a visual inspection to check for issues such as cracked welds, leaks, or damaged, loose, or missing parts.
- Always maintain the jack according to the maintenance instructions on page 7, and do not make any alterations or modifications to it.
- Conduct inspections as outlined in this owner's manual.
- Inspect the jack immediately if it has been exposed to an abnormal load or shock.
- Owners and/or operators should know that repairing this product may require specialized equipment and knowledge (see the maintenance section).

6. STORAGE

Always store the Borum jack in a dry location on a level surface with the lift ram pistons fully retracted, keeping it away from corrosive vapors, abrasive dust, or any other damaging elements.

7. MAINTENANCE

We recommend monthly maintenance for optimal performance. Proper lubrication is essential for jacks, as they handle heavy loads. Restrictions caused by dirt, rust, or similar debris can lead to slow movement or sudden, damaging jerks to internal components. The following steps are intended to keep your jack well-maintained and fully operational.

Important: Dirt is the primary cause of failure in hydraulic units. Keep the jack clean and well-lubricated to prevent foreign matter from entering the system. If the jack has been exposed to rain, snow, sand, or grit, clean it thoroughly before storing or using it.

- Use only manufacturer-approved replacement parts. Disconnect the air supply before performing any maintenance.
- Apply light hydraulic oil to lubricate the ram, linkages, saddle, wheels, and pump mechanism.
- Visually check for cracked welds, bent, loose, missing parts, or hydraulic oil leaks.
- Remove any hydraulic jack from service if it is damaged, worn, or operating abnormally until repaired by an authorized service representative.
- Regularly clean all surfaces and keep all labels and warnings intact.
- Monitor and maintain the hydraulic ram oil level.
- Inspect the ram every three months for rust or corrosion. Clean as necessary and wipe with a clean, oily cloth. Always lower the saddle and ram fully when not in use.
- Store the jack in the fully retracted position to protect critical areas from corrosion. Avoid using brake fluid, transmission fluid, or regular motor oil, as they can harm the seals.

ONLY USE HIGH QUALITY HYDRAULIC FLUID – ISO68

8. SERVICE & REPAIR

If any Borum jack is found to be damaged, worn, or operating abnormally, it must be taken out of service until repaired by an authorized service agent. Owners and/or operators should understand that repairing this product may require specialized equipment and expertise. Use only authorized parts, labels, and decals on this equipment. We recommend an annual inspection by an authorized repair facility to ensure the jack remains in optimal condition and features the manufacturer-specified decals and safety labels.

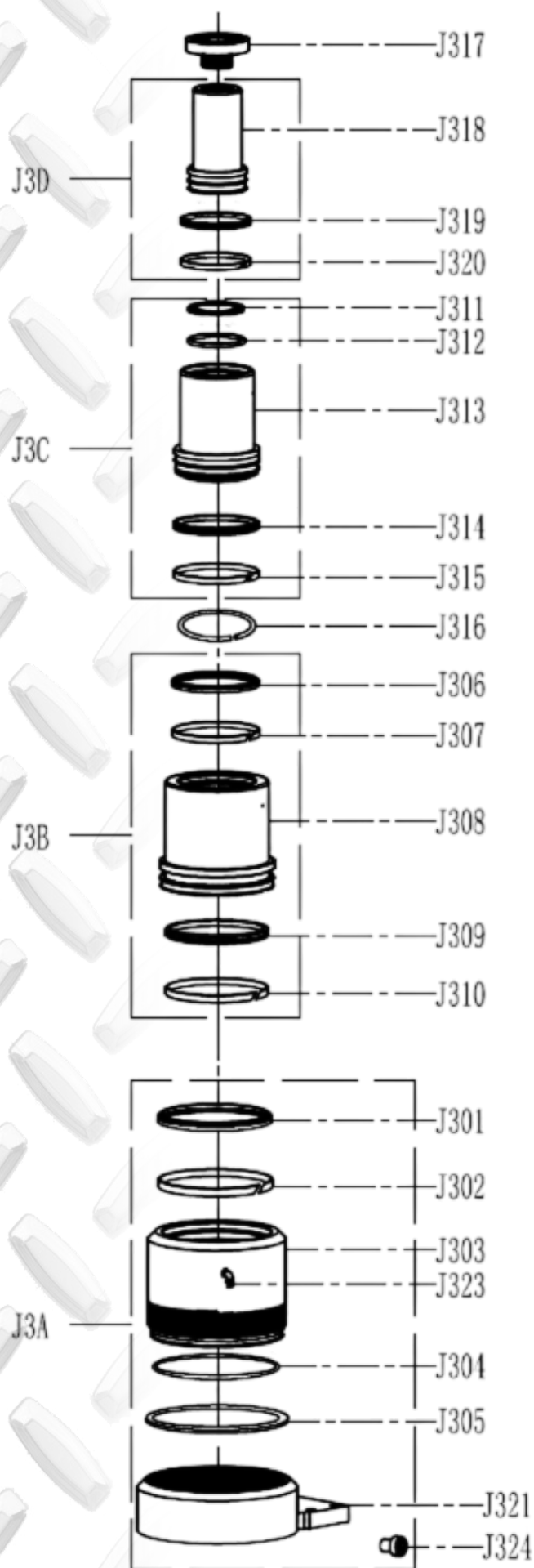
TROUBLESHOOTING

PROBLEM	POSSIBLE CAUSE	ACTION
Jack will not lift	<ul style="list-style-type: none"> Control valve in wrong position Low/no oil in reservoir Air-locked system Load is above capacity of jack Delivery valve and/or bypass valve not working correctly Seals worn out or defective Not enough air pressure 	<ul style="list-style-type: none"> Turn control valve knob clockwise Fill with oil and bleed system. Bleed system Use correct equipment Clean to remove dirt or foreign matter. Replace oil Install appropriate seal kit. Ensure constant air delivery of above 120psi
Jack lifts only partially	<ul style="list-style-type: none"> Too much or not enough oil 	<ul style="list-style-type: none"> Check oil level
Jack advances slowly	<ul style="list-style-type: none"> Pump not working correctly Leaking seals 	<ul style="list-style-type: none"> Install seal kit, or replace power unit Install seal kit
Jack lifts load but doesn't hold	<ul style="list-style-type: none"> Cylinder packing is leaking Valve not working correctly (suction, delivery, release or bypass) Air-locked system 	<ul style="list-style-type: none"> Install seal kit Inspect valves, Clean and repair seat surfaces Bleed air system as per instructions
Jack leaks oil	<ul style="list-style-type: none"> Worn or damaged seals 	<ul style="list-style-type: none"> Install seal kit
Jack will not retract	<ul style="list-style-type: none"> Control valve in wrong position Air pressure too low 	<ul style="list-style-type: none"> Move control valve to DOWN position Ensure constant air delivery of above 120PSI
Jack retracts slowly	<ul style="list-style-type: none"> Cylinder damaged internally 	<ul style="list-style-type: none"> Send jack to authorised service centre

PLEASE NOTE:

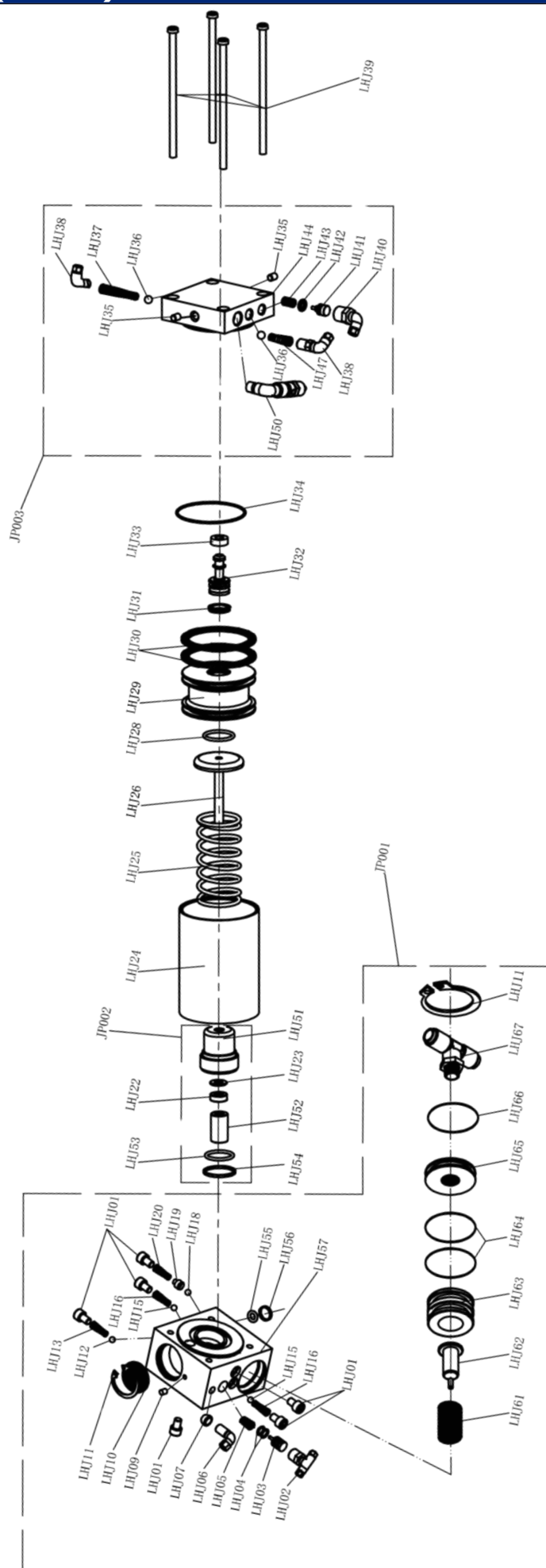
TO LOWER THE JACK, THE SAME AMOUNT OF FREE AIR FLOW IS REQUIRED AS WHEN LIFTING

PARTS LIST & DIAGRAM (CYLINDER)



CYLINDER			
Assy No.	Part No.	Description	Qty
J3A	J301	BASE + OUTER SLEEVE ASSEMBLY	1 set
	J302		
	J303		
	J304		
	J305		
	J321		
	J323		
	J324		
J3B	J306	INNER SLEEVE ASSEMBLY	1 set
	J307		
	J308		
	J309		
	J310		
/	J316	LOCKING RING	1 pc
J3C	J311	INNER SLEEVE ASSEMBLY	1 set
	J312		
	J313		
	J314		
	J315		
J3D	J318	PISTON ASSEMBLY	1 set
	J319		
	J320		
/	J317	SADDLE	1 pc
J3E	J301, J302, J304, J305, J306, J307, J309, J310, J311, J312, J314, J315, J318, J319, J320	SEAL KIT	1set

PARTS DIAGRAM (PUMP)

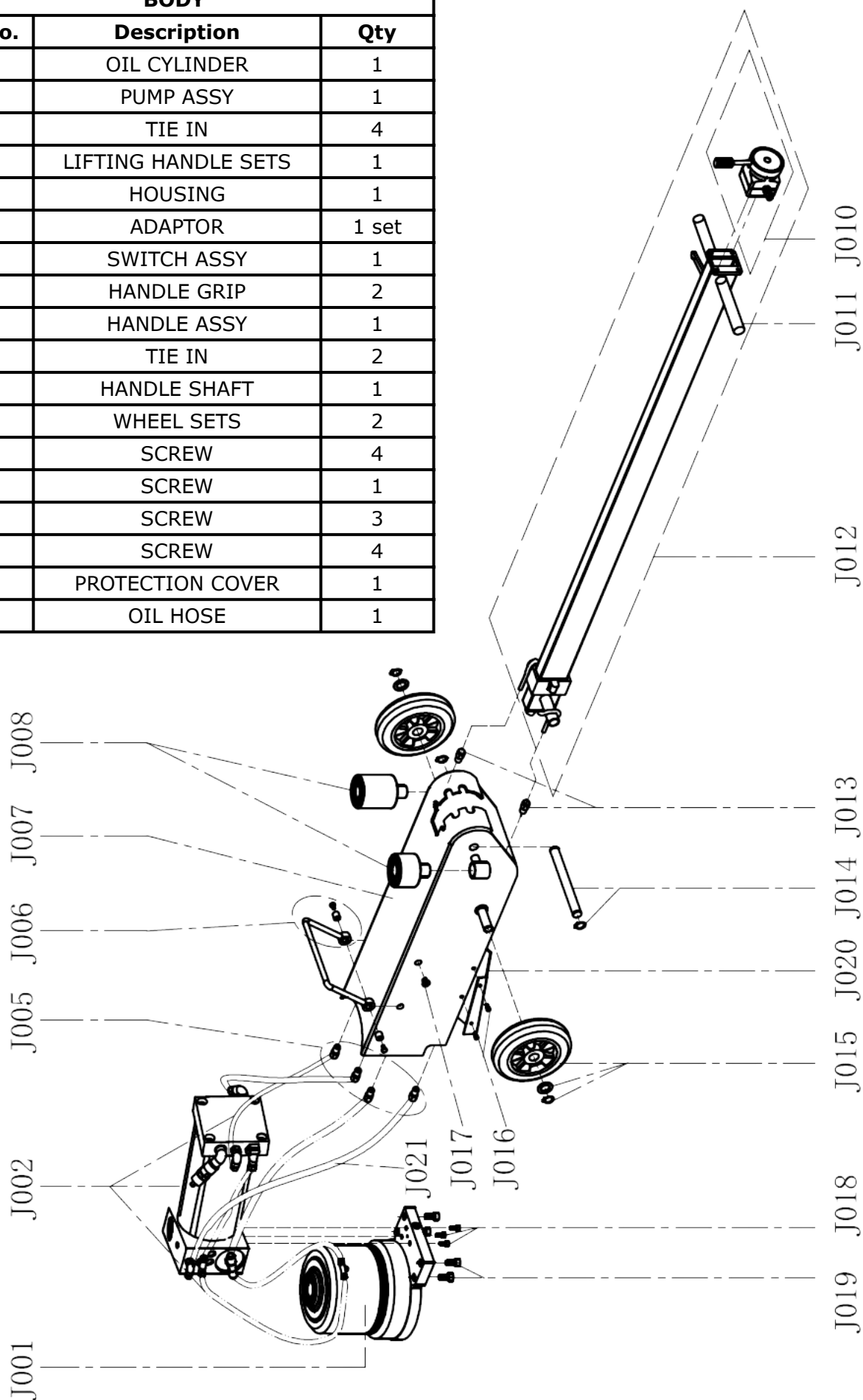


PARTS LIST (PUMP)

PUMP ASSEMBLY PARTS LIST					
Part no.	Description	Qty	Part no.	Description	Qty
LHJ01	SCREW	6	LHJ35	SCREW	2
LHJ02	TIE IN	1	LHJ36	RUBBER BALL	2
LHJ03	OIL DRAIN BOLT	1	LHJ37	SPRING	1
LHJ04	ORING	2	LHJ38	TIE IN	2
LHJ05	SPRING	1	LHJ39	SCREW	4
LHJ06	TIE IN	1	LHJ40	TIE IN	1
LHJ07	FITTER	1	LHJ41	PISTON	1
LHJ09	SCREW	1	LHJ42	ORING	1
LHJ10	SILENCER	1	LHJ43	SPRING	1
LHJ11	SNAP RING	2	LHJ44	AIR INLET VALVE	1
LHJ12	STEEL BALL	1	LHJ47	SPRING	1
LHJ13	SPRING	1	LHJ50	SAFETY VALVE	1
LHJ15	STEEL BALL	2	LHJ51	OIL PUMP	1
LHJ16	SPRING	2	LHJ52	GUIDER SLEEVE	1
LHJ18	STEEL BALL	1	LHJ53	ORING	1
LHJ19	SCREW NUT	1	LHJ54	LOCKING RING	1
LHJ20	SPRING	1	LHJ55	ORING	1
LHJ22	B3 SEAL	1	LHJ56	LOCKING RING	1
LHJ23	LOCKING RING	1	LHJ57	CHECK VALVE	1
LHJ24	AIR CYLINDER	1	LHJ61	SPRING	1
LHJ25	SPRING	1	LHJ62	OIL DRAIN BOLT	1
LHJ26	PLUNGER ROD	1	LHJ63	OIL DRAIN PISTON	1
LHJ28	ORING	1	LHJ64	ORING	2
LHJ29	PISTON	1	LHJ65	OIL DRAIN COVER	1
LHJ30	PISTON SEAL	2	LHJ66	ORING	1
LHJ31	Z8 SEAL	1	JP001	CHECK VALVE ASSY	1 set
LHJ32	PISTON	1	JP002	OIL PUMP ASSY	1 set
LHJ33	RUBBER CAP	1	JP003	AIR INLET VALVE ASSY	1 set
LHJ34	ORING	1			

PARTS LIST (PUMP)

BODY		
Part No.	Description	Qty
J001	OIL CYLINDER	1
J002	PUMP ASSY	1
J005	TIE IN	4
J006	LIFTING HANDLE SETS	1
J007	HOUSING	1
J008	ADAPTOR	1 set
J010	SWITCH ASSY	1
J011	HANDLE GRIP	2
J012	HANDLE ASSY	1
J013	TIE IN	2
J014	HANDLE SHAFT	1
J015	WHEEL SETS	2
J016	SCREW	4
J017	SCREW	1
J018	SCREW	3
J019	SCREW	4
J020	PROTECTION COVER	1
J021	OIL HOSE	1



PRODUCT INFORMATION TIPS

PRODUCT INFORMATION

How to extend the life of your Air Actuated Truck Jack

9 Top Tips

to extend the life of
your TQB BRANDS
Borum Air Actuated
Truck Jacks

Includes Models: BTJ1530TAM, BTJ1530TA, BTJ60TA, BTJ1025TA, BTJ2550TA, BTJ5080TA, BTJ102550TA, BTJ204060TA.

1 Ensure Hydraulic oil is at correct levels.



Follow the BTJ Series relevant owner's manual instructions for maintenance, also available as a download on our webpage at www.tqbbrands.com.au

2 Regularly lubricate the Air motor.

Lubrication of the Air motor is essential for smooth operation while raising a vehicle.



Air motors require a minimum of 20ml of a suitable lubricant such as SAE 32 Grade Hydraulic Oil or Air Tool Lubricant at weekly intervals dependant on usage where daily/constant use may require lubrication more frequently. Please apply directly into the air trigger mechanism air supply coupling.

3 Always store in the fully lowered position.

Storage in the fully lowered position ensures the lift ram assembly and pump piston is sealed from exposure to weather fluctuations and keeps the hydraulic ram and pump seals in a relaxed condition ready to work when required.

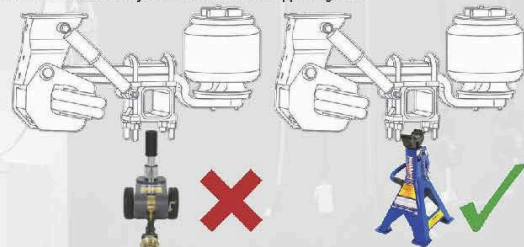


4 Hazards and Obstructions.

All wheeled TQB Brands equipment must be used on smooth surface free of cracks, crevices and tripping hazards that can foul the wheels during operation or relocation.

5 Never use Truck Jack for supporting loads.

To ensure long life of the hydraulic lift ram seals, a load must not be supported above the fully lowered position. Once a vehicle is raised it must be supported with a load appropriate vehicle stand with the jack lowered and not supporting load.



6 Use the available solid extension inserts where applicable.

Single piston telescopic jacks have their greatest stability from the fully lowered height to 85% of total extended height. Where the lowered height of the jack is lower than the load points height is from the ground, the solid extension inserts should always be used to close the clearance between jack and load point, this also greatly reduces the potential of lateral force.



7 Off centre loading or unbalanced loads can affect the smooth lowering & raising operation.

Always consult your vehicle manufacturer specifications for the correct lift point. Never lift from a suspension pivot or air bag mount plate where these items are designed to travel in an arc causing excess lateral force to the jack throughout its lift cycle.



8 Read the user Manual thoroughly and keep a copy easily accessible.

9 Visit our webpage www.tqbbrands.com.au for instructional documents & pre-start videos.

TQ TRADEQUIP
the trusted brand in equipment

TQ PRO
Trusted by serious professionals

BORUM
INDUSTRIAL WORKSHOP EQUIPMENT

WARRANTY

BORUM Industrial products have been carefully tested and inspected before shipment and are guaranteed to be free from defective materials and workmanship for a period of 12 months from the date of purchase except where tools are hired out when the guarantee period is ninety days from the date of purchase.

Should this piece of equipment develop any fault, please return the complete tool to your nearest authorised warranty repair agent or contact TQB Brands Pty Ltd Warranty team – warranty@tqbbrands.com.au.

If upon inspection it is found that the fault occurring is due to defective materials or workmanship, repairs will be carried out free of charge. This guarantee does not apply to normal wear and tear, nor does it cover any damage caused by misuse, careless or unsafe handling, alterations, accident, or repairs attempted or made by any personnel other than the authorised TQB Brands Pty Ltd repair agent.

This guarantee applies in lieu of any other guarantee expressed or implied and variations of its terms are not authorised.

Your TQB Brands Pty Ltd guarantee is not effective unless you can produce upon request a dated receipt or invoice to verify your proof of purchase within the 12month period.

Consumer Guarantee

Our goods come with a guarantee that cannot be excluded under the Australian Consumer Law. You are entitled to a replacement or refund for a major failure and compensation for any other reasonably foreseeable loss or damage. You are also entitled to have the goods repaired or replaced if the goods fail to be of acceptable quality and the failure does not amount to a major failure.



All images and illustrations shown are for reference purposes only. All information, specifications and illustrations in this manual are based on the latest information available at the time of publication and are subject to change without notice. The information in this manual is periodically revised to ensure the latest information is included. Download the latest version of this manual and other related technical documentation from www.tqbbrands.com.au.